

PK kits include: Pistons, rings, pins, clips, top end gasket kit, & needle bearing when applicable.
CK kits include: Pistons, rings, pins, clips, top end gasket kit, & cylinder/sleeve when applicable.
 • Individual pistons include: Rings, pins & clips *(unless noted otherwise)*.

											
Model	Years	Std. Bore x Stroke (mm)	Bore (mm)	Top End Kit	Price Per Kit	Piston (rings, pin & clips)	Price Per Piston	Repl. Ring Set	Repl. Pin & Clips	Complete Top End Gasket Kit	Top End Bearing
KTM, LEM Cobra, Cobra Action 50cc, Reed Pro-Lite™ <i>Will not fit King Cobra Model Chrome Bore</i>		39 x 41.7	39.00 41.00			698M03900 698M04100	\$88.00 \$92.00	1535CDM 1614CD	S563 CW12	W5755 \$35.57	B1041 \$16.96
50 Mini Adventure AC Pro-Lite™ Nikasil Bore	2002-08	39.5 x 40	39.50 41.50	PK1640 ---	\$134.07	803M03950 803M04150	\$88.00 \$92.00	1555CS 1634CS	S563 CW12	W6256 \$29.11	B1041 \$16.96
50 SX LC Pro-Lite™ Nikasil Bore	2001-08	39.5 x 40	39.50 41.50	PK1642 PK1643	\$139.88 \$143.88	803M03950 803M04150	\$88.00 \$92.00	1555CS 1634CS	S563 CW12	W6259 \$29.11	B1041 \$16.96
50 SX Pro-Lite™ Nikasil Bore	2009-13	39.5 x 40	39.50 41.50			874M03950 874M04150	\$88.00 \$92.00	1555CS 1634CS	S563 CW12		B1041 \$16.96
65 SX/XC Pro JR Pro SR Pro-Lite™ Nikasil Bore	1999-08	45 x 40	45.00 47.00	PK1514 PK1515	\$149.88 \$159.88	746M04500 746M04700	\$98.00 \$108.00	1772CS 1850CS	S595 CW12	W6259 \$34.92	B1042 \$16.96
65 SX/XC Pro-Lite™ Nikasil Bore	2009-13	45 x 40.8	45.00 47.00			864M04500 864M04700	\$98.00 \$108.00	1772CS 1850CS	S595 CW12	W6810 \$30.17	B1042 \$16.96
85 SX/XC 105 SX <i>Do not overbore 85cc engine</i>	2003-12 2004-08	47 x 48.95	47.00 52.00	PK1639 PK1644	\$156.08 \$186.08	855M04700 855M05200	\$108.00 \$138.00	1850CS 2047CS	S517 CW14	85 SX/XC W6348 105 SX W6659 \$32.28 \$33.54	B1012 \$15.82
125 SX Pro-Lite™	1987-93	54.25 x 54	54.25			*627M05425	B.O.D.	2136CD	S467 CW15	W5665 \$35.57	
125 SX Pro-Lite™ Nikasil Bore	1998-00	54.25 x 54	54.25			740M05425	\$118.00	2136CS	S467 CW15	W5760 \$35.57	B1013 \$16.96
125 SX Pro-Lite™ Nikasil Bore	2001	54 x 54.5	54.00 56.00	---	\$202.85	786M05400 786M05600	\$118.00 \$142.00	2126CS 2205CS	S467 CW15	W5760 \$35.57	B1013 \$16.96
Racers Choice GP Style 125 SX Single Ring ArmorGlide skirt coat <i>Crankcase clearance required for 57mm and larger.</i>	2001	54 x 54	54.00 56.00 58.00			836M05400 836M05600 836M05800	\$152.00 \$162.00	2126CSA 2205CS 2284CSA <i>CSA are titanium nitride coated</i>	S632 CW15	W5760 \$35.57	B1013 \$16.96
125 SX Pro-Lite™ Nikasil Bore	2002-06	54 x 54.5	54.00 56.00	PK1512 PK1513	\$181.95 \$205.95	786M05400 786M05600	\$118.00 \$142.00	2126CS 2205CS	S467 CW15	W5972 \$38.42	B1013 \$16.96
Racers Choice GP Style 125 SX Single Ring ArmorGlide skirt coat <i>Crankcase clearance required for 57mm and larger.</i>	2002-06	54 x 54.5	54.00 56.00 58.00			836M05400 836M05600 836M05800	\$152.00 \$162.00	2126CSA 2205CS 2284CSA <i>CSA are titanium nitride coated</i>	S632 CW15	W5972 \$38.42	B1013 \$16.96
Racers Choice GP Style 125 SX Double Ring ArmorGlide skirt coat	2002-06	54 X 54.5	54.00	PK1450	\$205.99	868M05400	\$152.00	2126CD	S632 CW15	W5972 \$38.42	B1013 \$16.96
125 SX 125 EXC Single Ring Pro-Lite™	2007-13 2009-12	54 x 54.5	54.00 56.00	---	\$198.24	786M05400 786M05600	\$118.00 \$142.00	2126CS 2205CS	S467 CW15	W6633 \$39.28	B1013 \$16.96
Racers Choice GP Style 125 SX 125 EXC Double Ring Electra coated ArmorGlide skirt coat	2007-13 2009-12	54 X 54.5	54.00			868M05400	\$152.00	2126CD	S632 CW15	W6633 \$39.28	B1013 \$16.96

*Build On Demand - Contact Wiseco for pricing, batch minimums, and lead times.

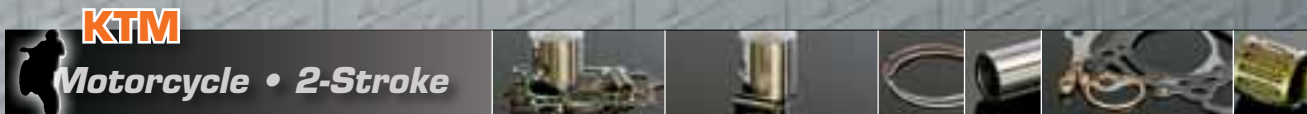
KTM
Motorcycle • 2-Stroke


	Model	Years	Std. Bore x Stroke (mm)	Bore (mm)	Top End Kit	Price Per Kit	Piston (rings, pin & clips)	Price Per Piston	Repl. Ring Set	Repl. Pin & Clips	Complete Top End Gasket Kit	Top End Bearing	
Electronics	144 SX	2007-08	56	56.00	PK1871	\$198.24	869M065600	\$142.00	2205CS	S632	W6633	B1013	
Fuel Management	150 SX ArmorGlide skirt coat	2009-13	56 X 58.5							CW15	\$39.28	\$16.96	
Crankshafts	200	1998-02	64	64.00	PK1369	\$188.51	770M06400	\$142.00	2520CD	S486	W5907	B1082	
Cams/Valves	200 EXC 200 MXC Pro-Lite™ Nikasil Bore	1998-02 1998-02 1998-02	x 60	65.00 66.00			*770M06500 770M06600	B.O.D. \$152.00	2559CD 2598CD	CW16	\$42.68	\$16.96	
Clutch	200 EXC/MXC Pro-Lite™ Nikasil Bore	2003-12	64 x 60	64.00 65.00 66.00	PK1373	\$187.31	770M06400 *770M06500 770M06600	\$142.00 B.O.D. \$152.00	2520CD 2559CD 2598CD	S486 CW16	W6141 \$41.48	B1082 \$16.96	
Top End	200 XC-W	2006-10	64	64.00	PK1373	\$187.31	770M06400	\$142.00	2520CD	S486	W6141	B1082	
Can-Am	Pro-Lite™ Nikasil Bore		x 60	65.00 66.00	--- ---		*770M06500 770M06600	B.O.D. \$152.00	2559CD 2598CD	CW16	\$41.48	\$16.96	
ATV	200 SX Pro-Lite™	2003-06	64 X 60	64.00	PK1407	\$183.48	825M06400	\$142.00	2520CS	S486	W6141 \$41.48	B1082 \$16.96	
European	250 <i>New</i>	1977-82	72.5	72.50			*10892M07250	B.O.D.	2854CS	S280			
Dirt	Single Ring		x							CW18			
Street	ArmorGlide skirt coated		60										
Honda	250 SX/EXC Pro-Lite™ Nikasil Bore	1990-94	67.5 x 69.5	67.50 68.00			601M06750 601M06800	\$152.00	2658CD 2677CD	S459 CW18	W5327 \$42.68	B1037 \$16.96	
Dirt													
ATV	250 SX Pro-Lite™ Nikasil Bore	1995	67.5 x 69.5	67.50			*655M06750	B.O.D.	2658CD	S459	W5327 \$42.68	B1037 \$16.96	
Street										CW18			
Kawasaki	250 SX/EXC/MXC Pro-Lite™ Nikasil Bore	1996-99	67.5 x 69.5	67.50	PK1765	\$221.64	694M06750	\$162.00	2658CD	S459	W5327 \$42.68	B1037 \$16.96	
Dirt										CW18			
ATV	250 EXC/MXC Pro-Lite™	2000-05	66.4 x 72	66.40			857M06640	\$152.00	2614CS	S508	W5908 \$46.99	B1037 \$16.96	
Street										CW18			
KTM	250 SX Pro-Lite™	2000-02	66.4 x 72	66.40			774M06640	\$152.00	2614CS	S508	W5908 \$46.99	B1037 \$16.96	
Dirt										CW18			
ATV	250 SX Pro-Lite™ Single Ring	2003-04	66.4 x 72	66.40	PK1869	\$220.22	824M06640	\$152.00	2614CS	S508	W6144 \$51.26	B1037 \$16.96	
Street										CW18			
Polaris	250 SX Pro-Lite™ Double Ring	2005-06	66.4 x 72	66.40 68.50 (68.50 is 265cc)			856M06640 856M06850	\$152.00	2614CD 2697CD	S508 CW18	W6353 \$29.82	B1037 \$16.96	
ATV													
Suzuki	250 SX Pro-Lite™ Double Ring	2007-13	66.4 x 72	66.40 68.50 (68.50 is 265cc)			856M06640 856M06850	\$152.00	2614CD 2697CD	S508 CW18	W6622 \$29.82	B1037 \$16.96	
Dirt													
ATV	250 SX Pro-Lite™ Single Ring	2005-06	66.4 x 72	66.40			824M06640	\$152.00	2614CS	S508	W6353 \$29.82	B1037 \$16.96	
Street										CW18			
Yamaha	250 SX Pro-Lite™ Single Ring	2007-13	66.4 x 72	66.40			824M06640	\$152.00	2614CS	S508	W6622 \$29.82	B1037 \$16.96	
Dirt										CW18			
ATV	250 XC, XC-W, EXC Pro-Lite™ Double Ring	2006-13	66.4 x 72	66.40			824M06640	\$152.00	2614CS	S508	W6353 2006 \$29.82	W6622 2007-13 \$35.36	B1037 \$16.96
Street										CW18			
PWC	250 XC, XC-W, EXC	2006-13	66.4 x 72	66.40 68.50 (68.50 is 265cc)			856M06640 856M06850	\$152.00	2614CD 2697CD	S508	W6353 2005-06 \$29.82	W6622 2007-13 \$35.36	B1037 \$16.96
Sleeves	Pro-Lite™ Double Ring									CW18			
Rings	*Build On Demand - Contact Wiseco for pricing, batch minimums, and lead times.												

Accessories

Apparel

PK kits include: Pistons, rings, pins, clips, top end gasket kit, & needle bearing when applicable.
CK kits include: Pistons, rings, pins, clips, top end gasket kit, & cylinder/sleeve when applicable.
 • Individual pistons include: Rings, pins & clips (unless noted otherwise).



Model	Years	Std. Bore x Stroke (mm)	Bore (mm)	Top End Kit	Price Per Kit	Piston (rings, pin & clips)	Price Per Piston	Repl. Ring Set	Repl. Pin & Clips	Complete Top End Gasket Kit	Top End Bearing
300 Pro-Lite™ Nikasil Bore	1991-94	72 x 72	72.00 72.50 73.00			631M07200 *631M07250 631M07300	\$192.00 B.O.D. \$192.00	2835CD 2854CD 2874CD	S477 CW18	W5328 \$42.68	B1037 \$16.96
300 Pro-Lite™ Nikasil Bore	1996-03	72 x 72	72.00 72.50 73.00	PK1636	\$251.64	712M07200 *712M07250 *712M07300	\$192.00 B.O.D. B.O.D.	2835CD 2854CD 2874CD	S477 CW18	W5328 \$42.68	B1037 \$16.96
300 EXC 300 MXC	2004 2004	72 x 72	72.00	PK1408	\$241.22	858M07200	\$192.00	2835CD	S513 CW18	W6352 \$32.28	B1037 \$16.96
300 EXC/MXC 300 XC/XC-W	2005 2006-07	72 x 72	72.00	PK1409	\$241.22	858M07200	\$192.00	2835CD	S513 CW18	W6358 \$32.28	B1037 \$16.96
300 XC/XC-W Pro-Lite™ Double Ring	2008-13	72 x 72		PK1870	\$244.32	858M07200	\$192.00	2835CD	S513 CW18	W6622 \$35.36	B1037 \$16.96
360 GS Single Ring <i>New</i>	1987-89	75 x 81	75.00			*7985M07500	B.O.D.	2953TD	S423 CW20		
360 SX Pro-Lite™ Nikasil Bore	1996-97	78 x 74	78.00			747M07800	\$192.00	3071TD	S511 CW18	W5694 \$42.68	B1037 \$16.96
380 EXC Pro-Lite™ Nikasil Bore	1998-02	78 x 77	78.00 79.00	---	PK1638 \$251.64	748M07800 748M07900	\$192.00	3071TD 3110TD	S511 CW18	W5694 \$42.68	B1037 \$16.96
380 SX Pro-Lite™ Nikasil Bore	1998-02	78 x 77	78.00 79.00			748M07800 748M07900	\$192.00	3071TD 3110TD	S511 CW18	W5694 \$42.68	B1037 \$16.96

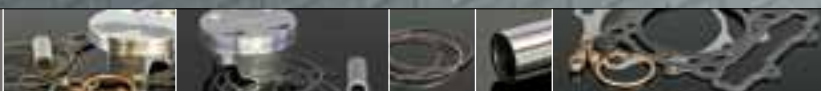
*Build On Demand - Contact Wiseco for pricing, batch minimums, and lead times.



- Electronics
- Fuel Management
- Crankshafts
- Cams/Valves
- Clutch
- Top End
- Can-Am
- ATV
- European
- Dirt
- Street
- Honda
- Dirt
- ATV
- Street
- Kawasaki
- Dirt
- ATV
- Street
- KTM**
- Dirt
- ATV
- Street
- Polaris
- ATV
- Suzuki
- Dirt
- ATV
- Street
- Yamaha
- Dirt
- ATV
- Street
- PWC
- Sleeves
- Rings
- Accessories
- Apparel

KTM

Motorcycle • 4-Stroke



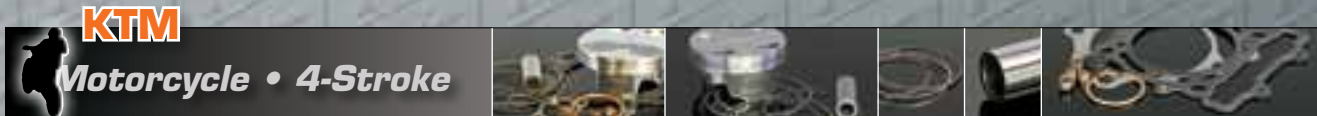
	Model	Years	Std. Bore x Stroke (mm)	Bore (mm)	Top End Kit	Price Per Kit	Piston (rings, pin & clips)	Price Per Piston	Repl. Ring Set	Repl. Pin & Clips	Complete Top End Gasket Kit
Electronics	250 SX-F	2006-12	76	76.00	PK1763	\$269.59	4981M07600	\$204.00	2992ZG	S686	W6573
	250 XC-F	2007-13	x								\$69.64
Fuel Management	250 XC-F-W	2007-13	55							CW16	
	12.8:1 Stock Comp. ArmorGlide skirt coat										
Crankshafts	250 SX-F	2006-12	76	78.00			*11047M07800	B.O.D.	3071XG	S686	
	250 XC-F	2007-13	x								
Cams/Valves	250 XC-F-W	2007-13	55							CW16	
	12.8:1 Stock Comp. ArmorGlide skirt coat										
Clutch											
Top End	250 SX-F	2006-12	76	76.00			40006M07600	\$230.00	2992ZG	S686	W6573
	250 XC-F	2007-13	x								\$69.64
Can-Am	250 XC-F-W	2007-13	55							CW16	
	13.5:1 High Comp. ArmorGlide skirt coat										
ATV											
European	250 SX-F	2006-12	76	78.00			*11035M07800	B.O.D.	3071XG	S686	W6573
	250 XC-F	2007-13	x								\$69.64
Dirt	250 XCF-W	2007-13	55							CW16	
	13.8:1 High Comp. ArmorGlide skirt coat										
Street											
Honda	250 SX-F	2013	78	78.00			40074M07800	\$204.00	7800YB	S677	
	13.9:1 Stock Comp. ArmorGlide skirt coat										
Dirt			x								W6883
			52.3								
ATV	350 SX-F	2011-13	88	88.00			40014M08800	\$204.00	8800YD	S759	W6896
	13.5:1 Stock Comp. ArmorGlide skirt coat										
Street			x								\$66.84
			57.5							CW18	
Kawasaki	350 SX-F	2011-13	88	88.00			40015M08800	\$230.00	8800YD	S759	W6896
	14.5:1 High Comp. ArmorGlide skirt coat										
Dirt			x								\$66.84
			57.5							CW18	
ATV	350 EXC-F, XC-F, XCF-W	2012-13	88	88.00			40056M08800	\$204.00	8800YD	S759	W6896
	Freeride 12.3:1 Stock Comp. ArmorGlide skirt coat										
Street			x								\$66.84
			57.5							CW18	
KTM	350 EXC-F, XC-F, XCF-W	2012-13	88	88.00			40090M08800	\$230.00	8800YD	S759	W6896
	Freeride 13:1 High Comp.										
Dirt			x								\$66.84
			57.5							CW18	
ATV											
	ArmorGlide skirt coat										
Street	<i>*Build On Demand - Contact Wiseco for pricing, batch minimums, and lead times.</i>										

- Polaris
- ATV
- Suzuki
- Dirt
- ATV
- Street
- Yamaha
- Dirt
- ATV
- Street
- PWC
- Sleeves
- Rings
- Accessories
- Apparel



PK kits include: Pistons, rings, pins, clips, top end gasket kit, & needle bearing when applicable.
CK kits include: Pistons, rings, pins, clips, top end gasket kit, & cylinder/sleeve when applicable.
 • Individual pistons include: Rings, pins & clips *(unless noted otherwise)*.

• Premium pump fuel required for high compression ratios up to 13.5:1.
 • Increased Octane (race fuel) required for comp. ratios over 13.5:1.



Model	Years	Std. Bore x Stroke (mm)	Bore (mm)	Top End Kit	Price Per Kit	Piston (rings, pin & clips)	Price Per Piston	Repl. Ring Set	Repl. Pin & Clips	Complete Top End Gasket Kit
450 SX 450 XC 12:1 Comp.	2003-06 2006	95 x 63.4	95.00			4805M09500	\$210.00	9500ZS	S641 CW20	W6153 \$82.98
450 SX 450 XC 13:1 High Comp.	2003-06 2006	95 x 63.4	95.00			4806M09500	\$236.00	9500ZS	S641 CW20	W6153 \$82.98
450 XC-F 450 SX-F 12.5:1 Comp. ArmorGlide skirt coat	2007-09 2007-12	97 x 60.8	97.00			4937M09700	\$210.00	9700ZS	S682 CW19	XC SX W6660 W6660 2008 2007-12 \$72.35 \$72.35
450 XC-F 450 SX-F 13.5:1 High Comp. ArmorGlide skirt coat	2007-09 2007-12	97 x 60.8	97.00			4938M09700	\$236.00	9700ZS	S682 CW19	XC SX W6660 W6660 2008 2007-12 \$72.35 \$72.35
450 SX-F 12.6:1 Comp. New ArmorGlide skirt coat	2013	95 x 63.4	95.00			40073M09500	\$210.00	9500ZV	S682 CW19	TBA
450 EXC, MXC, XC-W 11:1 Comp. ArmorGlide skirt coat	2003-07	89 X 72	89.00	PK1445	\$263.11	4941M08900	\$210.00	8900ZC	S553 W5509	W5883 \$53.11
450 EXC, MXC, XC-W 12:1 High Comp. ArmorGlide skirt coat	2003-07	89 X 72	89.00	PK1447	\$289.11	4942M08900	\$236.00	8900ZC	S553 W5509	W5883 \$53.11
450 EXC, MXC, XC-W 13.5:1 High Comp. ArmorGlide skirt coat	2003-07	89 X 72	89.00			4959M08900	\$236.00	8900ZC	S553 W5509	W5883 \$53.11
500 EXC, XC-W 11.8:1 Comp. New ArmorGlide skirt coat	2012	95 X 72	95.00			40064M09500	\$210.00	9500ZV	TBA TBA	TBA
505 SX-F/XC-F 12.5:1 Stock Comp. 4-Valve ArmorGlide skirt coat	2007-08	100 x 60.8	100.00			4947M10000	\$210.00	10000ZV	S675 CW20	TBA
505 SX-F/XC-F 13.5:1 High Comp. 4-Valve ArmorGlide skirt coat	2007-08	100 x 60.8	100.00			4948M10000	\$236.00	10000ZV	S675 CW20	TBA
520 SX, EXC 525 SX, EXC 11:1 Comp.	2000-02 2003-10	95 x 72	95.00 97.00			4731M09500 4731M09700	\$210.00	9500ZS 9700ZS	S641 CW20	520 525 W5885 W5885 2000-02 2003-05 \$79.37
520 SX, EXC 525 SX, EXC 12.5:1 High Comp.	2000-02 2003-10	95 x 72	95.00 97.00			4732M09500 4732M09700	\$236.00	9500ZS 9700ZS	S641 CW20	520 525 W5885 W5885 2000-02 2003-05 \$79.37
620 LC4 625 LC4 New 640 LC4 11.5:1 Stock Comp. ArmorGlide skirt coat	1994-08	101 x 76	101.00 102.00 103.00 105.00			*7849M10100 *7849M10200 *7849M10300 *7850M10500	B.O.D. B.O.D. B.O.D. B.O.D.	10100XS 10200XS 10300XS 4137GF	S550 W5590	
620 LC4 625 LC4 New 640 LC4 12:1 High Comp. ArmorGlide skirt coat	1994-08	101 x 76	101.00 102.00 103.00 105.00			*7853M10100	B.O.D.	3977XH CW22	S655 CW22	
990 LC8 V-Twin Superduke, Adventure New 11.8:1 Stock Comp.	All years	101 x 62.4	101.00			*7986M10100	B.O.D.	10100XS W5590	S618 W5590	

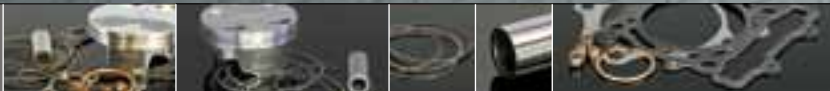
*Build On Demand - Contact Wiseco for pricing, batch minimums, and lead times.

Electronics
 Fuel Management
 Crankshafts
 Cams/Valves
 Clutch
 Top End
 Can-Am
 ATV
 European
 Dirt
 Street
 Honda
 Dirt
 ATV
 Street
 Kawasaki
 Dirt
 ATV
 Street
 KTM
 Dirt
 ATV
 Street
 Polaris
 ATV
 Suzuki
 Dirt
 ATV
 Street
 Yamaha
 Dirt
 ATV
 Street
 PWC
 Sleeves
 Rings
 Accessories
 Apparel

- Premium pump fuel required for high compression ratios up to 13.5:1.
- Increased Octane (race fuel) required for comp. ratios over 13.5:1.

KTM

ATV • 4-Stroke



	Model	Years	Std. Bore x Stroke (mm)	Bore (mm)	Top End Kit	Price Per Kit	Piston (rings, pin & clips)	Price Per Piston	Repl. Ring Set	Repl. Pin & Clips	Complete Top End Gasket Kit
Electronics	450 SX ATV 12.5:1 Comp. ArmorGlide skirt coat	2009-11	97 X 60.8	97.00			4937M09700	\$210.00	9700ZS	S682	W6660 \$72.35
Fuel Management	450 SX ATV 13.5:1 Comp. ArmorGlide skirt coat	2009-11	97 X 60.8	97.00			4938M09700	\$236.00	9700ZS	S682	W6660 \$72.35
Crankshafts										CW19	
Cams/Valves	450 SX Racers Choice Strutted Forging ArmorPlating New DLC coated pin 14:1 High Comp. ArmorGlide skirt coat	2009-11	97 x 60.8	97.00			RC996M09700	\$282.00	9700ZS	S682C	W6660 \$72.35
Clutch										CW19	
Top End											
Can-Am	450 XC ATV 11:1 Comp. ArmorGlide skirt coat	2008-09	89 X 72	89.00	PK1445	\$263.11	4941M08900	\$210.00	8900ZC	S553	W5883 \$53.11
ATV										W5509	
European	450 XC ATV 12:1 Comp. ArmorGlide skirt coat	2008-09	89 X 72	89.00	PK1447	\$289.11	4942M08900	\$236.00	8900ZC	S553	W5883 \$53.11
Dirt										W5509	
Street	450 XC ATV 13.5:1 Comp. ArmorGlide skirt coat	2008-09	89 X 72	89.00			4959M08900	\$236.00	8900ZC	S641	
Honda	505 SX ATV 505 XC ATV 12.5:1 Comp. ArmorGlide skirt coat	2009-10 2009	100 X 60.8	100.00			4947M10000	\$210.00	10000ZV	S675	
Dirt										CW20	
ATV	505 SX ATV 505 XC ATV 13.5:1 High Comp. ArmorGlide skirt coat	2009-10 2009	100 X 60.8	100.00			4948M10000	\$236.00	10000ZV	S675	
Street										CW20	
Kawasaki	525 XC ATV 11:1 Comp.	2008-12	95 x 72	95.00 97.00	PK1850	\$289.37	4731M09500 4731M09700	\$210.00	9500ZS	S641	W5885 \$79.37
Dirt									9700ZS		
ATV	525 XC ATV 12.5:1 Comp.	2008-12	95 x 72	95.00 97.00	PK1851	\$315.37	4732M09500 4732M09700	\$236.00	9500ZS	S641	W5885 \$79.37
Street									9700ZS		
KTM											

