

KAWASAKI

Motorcycle • 2-Stroke

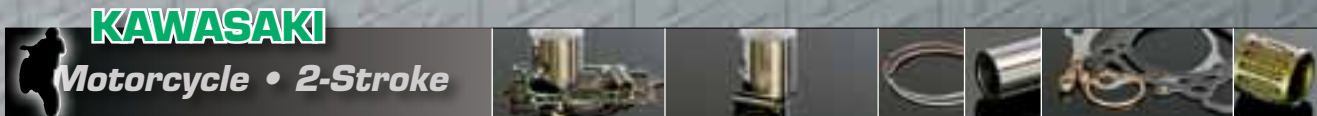


	Model	Years	Std. Bore x Stroke (mm)	Bore (mm)	Top End Kit	Price Per Kit	Piston (rings, pin & clips)	Price Per Piston	Repl. Ring Set	Repl. Pin & Clips	Complete Top End Gasket Kit	Top End Bearing
Electronics	KX125 Nikasil Bore	2003	54 x 54.5	54.00 56.00			822M05400 822M05600	\$118.00 \$142.00	2126CS 2205CS	S467 CW15	W6253 \$42.68	B1013 \$16.96
Fuel Management	Racers Choice Flat Top Conversion KX125	1995-08	54 x 54.5	54.00 56.00			755M05400 755M05600	\$118.00 \$142.00	2126CS 2205CS	S467 CW15	W5455 \$39.85 W5901 2001-02 \$42.68 W5666 W6109 1998-00 2003 \$37.24 \$42.68	B1013 \$16.96
Crankshafts	<i>No intake window. Pinned on centerline.</i>											
Cams/Valves												
Clutch	Racers Choice GP Style KX125	2003-08	54 x 54.5	54.00	PK1606	\$211.64	788M05400 788M05800	\$152.00 \$162.00	2126CS 2284CS	S632 CW15	W6253 \$42.68	B1013 \$16.96
Top End	Electra Coated • No intake window. • Pinned on centerline.											
Can-Am	• No crankcase modifications required for 58mm.											
ATV												
European	KX125 Pro-Lite™ Nikasil Bore	2004-08	54 x 54.5	54.00 56.00	PK1603 PK1604	\$177.64 \$201.64	834M05400 834M05600	\$118.00 \$142.00	2126CS 2205CS	S467 CW15	W6253 \$42.68	B1013 \$16.96
Dirt												
Street	KDX175 Electrofusion Bore	1980-82	66 x 50.6	66.00 67.00			469M06600 469M06700	\$128.004	2598CD 2638CD	S255 Piston pin not included CW16		B1016 1980-81 \$16.96
Honda												
Dirt												
ATV	KDX200 Pro-Lite™ Electrofusion Bore	1986-88	66 x 58	66.00 66.50 67.00 67.50 68.00	---	\$201.54	711M06600 711M06650 711M06700 *711M06750 711M06800	\$142.00 \$142.00 \$142.00 B.O.D. \$152.00	2598CD 2618CD 2638CD 2658CD 2677CD	S255 CW16	W5225 \$42.58	B1008 \$16.96
Street												
Kawasaki												
Dirt	KDX200 Pro-Lite™ Electrofusion Bore	1989-94	66 x 58	66.00 66.50 67.00 67.50 68.00	PK1496 ---	\$202.86	711M06600 711M06650 711M06700 *711M06750 711M06800	\$142.00 \$142.00 \$142.00 B.O.D. \$152.00	2598CD 2618CD 2638CD 2658CD 2677CD	S255 CW16	W5252 \$43.90	B1008 \$16.96
ATV												
Street												
KTM												
Dirt	KDX200 Pro-Lite™ Electrofusion Bore	1995-06	66 x 58	66.00 66.50 67.00 67.50 68.00	---	\$205.95	711M06600 711M06650 711M06700 *711M06750 711M06800	\$142.00 \$142.00 \$142.00 B.O.D. \$152.00	2598CD 2618CD 2638CD 2658CD 2677CD	S255 CW16	W5456 \$46.99	B1008 \$16.96
ATV												
Street												
Polaris	KDX220 Pro-Lite™ Electrofusion Bore	1998-05	69 x 58	69.00 70.00	---	\$212.86	750M06900 750M07000	\$142.00 \$152.00	2717CD 2756CD	S259 CW16	W5856 \$43.90	B1008 \$16.96
ATV												
Suzuki	KX250 KDX250 Electrofusion Bore	1978-86 1980-82	70 x 64.9	70.00 70.50 71.00 71.50 72.00			439M07000 439M07050 439M07100 *439M07150 *439M07200	\$162.00 \$162.00 \$162.00 B.O.D. B.O.D.	2756CD 2776CD 2795CD 2815CD 2835CD	S513 CW18	KX250 only W4899 1985-86 \$46.99	B1022 \$16.96
Dirt												
ATV												
Street	KX250 KDX250 Electrofusion Bore	1978-86 1980-84	70 x 64.9	70.00 70.50 71.00 71.50 72.00	PK1610 PK1611 PK1612	\$205.54	439M07000 439M07050 439M07100 *439M07150 *439M07200	\$162.00 \$162.00 \$162.00 B.O.D. B.O.D.	2756CD 2776CD 2795CD 2815CD 2835CD	S513 CW18	W4037 1983-84 \$26.58	B1022 \$16.96
Yamaha												
Dirt												
ATV	KX250 Electrofusion Bore	1985-86	70 x 64.9	70.00 70.50 71.00 71.50 72.00	---	\$245.95	439M07000 439M07050 439M07100 *439M07150 *439M07200	\$162.00 \$162.00 \$162.00 B.O.D. B.O.D.	2756CD 2776CD 2795CD 2815CD 2835CD	S513 CW18	W4899 \$46.99	B1022 \$16.96
Street												
PWC												

*Build On Demand - Contact Wiseco for pricing, batch minimums, and lead times.

- Rings
- Accessories
- Apparel

PK kits include: Pistons, rings, pins, clips, top end gasket kit, & needle bearing when applicable.
CK kits include: Pistons, rings, pins, clips, top end gasket kit, & cylinder/sleeve when applicable.
 • Individual pistons include: Rings, pins & clips (unless noted otherwise).



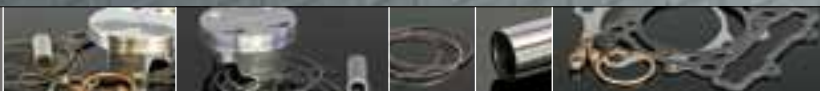
Model	Years	Std. Bore x Stroke (mm)	Bore (mm)	Top End Kit	Price Per Kit	Piston (rings, pin & clips)	Price Per Piston	Repl. Ring Set	Repl. Pin & Clips	Complete Top End Gasket Kit	Top End Bearing
KX250 Pro-Lite™ Electrofusion Bore	1987	67.4 x 70	67.40			556M06740	\$162.00	2652CD	S508	W5119	B1022
			68.00			*556M06800	B.O.D.	2677CD		\$46.56	\$16.96
			68.50			556M06850	\$162.00	2697CD	CW18		
			69.00			*556M06900	B.O.D.	2717CD			
KX250 Pro-Lite™ Electrofusion Bore	1988-89	67.4 x 70	67.40			556M06740	\$162.00	2652CD	S508	W5120	B1022
			68.00			*556M06800	B.O.D.	2677CD		\$46.56	\$16.96
			68.50			556M06850	\$162.00	2697CD	CW18		
			69.00			*556M06900	B.O.D.	2717CD			
KDX250 Pro-Lite™ Electrofusion Bore	1991-94	67.4 x 70	67.40			607M06740	\$152.00	2652CD	S508	W5758	B1022
			68.00			607M06800		2677CD		\$49.82	\$16.96
			68.50			607M06850		2697CD	CW18		
KX250 Pro-Lite™ Electrofusion Bore	1990-91	67.4 x 70	67.40			607M06740	\$152.00	2652CD	S508	W5275	B1022
			68.00			607M06800		2677CD		\$49.82	\$16.96
			68.50	PK1622	\$216.41	607M06850		2697CD	CW18		
KX250 Pro-Lite™ Electrofusion Bore	1992	66.4 x 72	66.40			617M06640	\$152.00	2614CD	S508	W5321	B1022
			67.00			617M06700		2638CD		\$49.82	\$16.96
			67.50	PK1284	\$218.78	617M06750		2658CD	CW18		
			68.50			617M06850		2697CD			
Racers Choice 250cc KX250 Single Ring ArmorGlide skirt coat	1992	66.4 x 72	66.40			737M06640	\$152.00	2614CS	S508	W5321	B1022
									CW18	\$49.82	\$16.96
KX250 Pro-Lite™ Electrofusion Bore	1993-01	66.4 x 72	66.40			617M06640	\$152.00	2614CD	S508	W5350	B1022
			67.00			617M06700		2638CD		\$49.82	\$16.96
			67.50	PK1288	\$218.78	617M06750		2658CD	CW18		
			68.50	PK1289		617M06850		2697CD			
Racers Choice 250cc KX250 Single Ring	1993-01	66.4 x 72	66.40			737M06640	\$152.00	2614CS	S508	W5350	B1022
									CW18	\$49.82	\$16.96
KX250 Pro-Lite™ Electrofusion Bore	2002-03	66.4 x 72	66.40			799M06640	\$152.00	2614CD	S508	W5350	B1022
			67.50	PK1504	\$223.06	799M06750		2658CD	CW18	\$49.82	\$16.96
KX250 Pro-Lite™ Electrofusion Bore	2004	66.4 x 72	66.40			799M06640	\$152.00	2614CD	S508	66.4 mm W6252	B1022
			67.50			799M06750		2658CD	CW18	67.5mm W6354	\$16.96
KX250 Pro-Lite™ Electrofusion Bore	2005-08	66.4 x 72	66.40			843M06640	\$152.00	2614CD	S508	W6324	B1022
			68.50	PK1379	\$214.90	843M06850		2697CD		2005-07 \$45.94	\$16.96
Racers Choice 250cc KX250 Single Ring Electra Coated	2005-08	66.4 x 72	66.40			844M06640	\$182.00	2614CS	S508	W6324	B1022
									CW18	2005-07 \$45.94	\$16.96
KX500 Electrofusion Bore	1988	86 x 86	86.00			575M08600	\$192.00	3386TD	S376	W5121	B1036
			86.50			575M08650	\$192.00	3405TD		\$52.67	\$18.09
			87.00			575M08700	\$192.00	3425TD	CW19		
			87.50			*575M08750	B.O.D.	3445TD			
			88.00			575M08800	\$202.00	3465TD			
KX500 Electrofusion Bore	1989-90	86 x 86	86.00			575M08600	\$192.00	3386TD	S376	W5276	B1036
			86.50			575M08650	\$192.00	3405TD		\$52.67	\$18.09
			87.00	PK1626	\$262.76	575M08700	\$192.00	3425TD	CW19		
			87.50			*575M08750	B.O.D.	3445TD			
			88.00	PK1628	\$272.76	575M08800	\$202.00	3465TD			
KX500 Electrofusion Bore	1991-04	86 x 86	86.00			575M08600	\$192.00	3386TD	S376	W5277	B1036
			86.50			575M08650	\$192.00	3405TD		\$52.67	\$18.09
			87.00	PK1629	\$262.76	575M08700	\$192.00	3425TD	CW19		
			87.50	PK1630	\$262.76	*575M08750	B.O.D.	3445TD			
			88.00	PK1632	\$272.76	575M08800	\$202.00	3465TD			

*Build On Demand - Contact Wiseco for pricing, batch minimums, and lead times.

- Premium pump fuel required for high compression ratios up to 13.5:1.
- Increased Octane (race fuel) required for comp. ratios over 13.5:1.

KAWASAKI

Motorcycle • 4-Stroke



	Model	Years	Std. Bore x Stroke (mm)	Bore (mm)	Top End Kit	Price Per Kit	Piston (rings, pin & clips)	Price Per Piston	Repl. Ring Set	Repl. Pin & Clips	Complete Top End Gasket Kit	
Electronics	KXL110/KXL110L 11:1 Comp.	2002-12	53 x 50.6	53.50 54.00			4875M05350 4875M05400	\$128.26	2106XE 2126XE	S592	W6388 \$44.59	
Fuel Management	KLX125 11:1 High Comp.	2002-06	57 x 48.8	57.00 58.00 61.00			4815M05700 4815M05800 4815M06100	\$116.61	2244XE	S593	57-59mm W6209	61mm W6206
Crankshafts									2283XE		2002-05 2002-05	W6206
Cams/Valves	KX250F 13.5:1 Stock Comp.	2004-05	77 x 53.6	77.00 79.00	PK1237 PK1238	\$251.59 \$287.96	4842M07700 4842M07900	\$184.00 \$220.00	7700YC	S677	77mm W6255	79mm W6284
Clutch									3110XG	CW16	\$34.15 \$33.67	\$67.96 \$67.96
Top End	KX250F 14.1:1 Comp.	2004-05	77 x 53.6	77.00	PK1239	\$287.96	4843M07700	\$220.00	7700YC	S677	W6255 \$67.96	
Can-Am	KX250F 13.5:1 Comp. 290cc Big Bore Cylinder Kit ArmorGlide skirt coat	2004-08	77 x 53.6	83.00	CK219	\$852.68	4983M08300	\$230.00	3268ZG	S677	W6675 \$69.96	
ATV												
European	Dirt Street											
Honda	KX250F 13.5:1 Comp. ArmorGlide skirt coat	2006	77 x 53.6	77.00 79.00	PK1596 PK1238	\$251.96 \$287.96	4904M07700 4842M07900	\$184.00 \$220.00	7700YC 3110XG	S677	77mm W6255	79mm W6284
Dirt												CW16
ATV	KX250F 13.5:1 Comp. ArmorGlide skirt coat	2007-08	77 x 53.6	77.00 79.00	PK1598 PK1238	\$251.96 \$287.96	4920M07700 4842M07900	\$184.00 \$220.00	7700YC 3110XG	S677	77mm W6255	79mm W6284
Street												CW16
Kawasaki	KX250F 14:1 Comp. ArmorGlide skirt coat	2007-08	77 x 53.6	77.00	PK1597	\$287.96	4927M07700	\$220.00	7700YC	S677	W6255 \$67.96	
Dirt												CW16
ATV	KX250F Racers Choice 14:1 High Comp. Boxed forgings	2007-09	77 x 53.6	77.00			RC850M07700	\$272.00	7700YCA	S677C	W6661 \$69.96	
Street										Titanium nitride coated rings	CW16	
KTM	KX250F 13.5:1 Comp. ArmorGlide skirt coat	2009	77 x 53.6	77.00 79.00	PK1827 ---	\$253.97	4920M07700 4842M07900	\$184.00 \$220.00	7700YC	S677	77mm W6661	80mm W6807
Dirt										CW16	\$69.97 \$69.97	
ATV	KX250F 14:1 Comp. ArmorGlide skirt coat	2009	77 x 53.6	77.00	PK1826	\$289.97	4927M07700	\$220.00	7700YC	S677	W6661 \$69.96	
Street												CW16
Polaris	KX250F 13.5:1 Comp. 290cc Big Bore piston - cylinder required. ArmorGlide skirt coat	2009	77 x 53.6	83.00			4983M08300	\$230.00	3268ZG	S677		
ATV												CW16
Suzuki	KX250F 13.2:1 Std. Comp. ArmorGlide skirt coat	2010	77 x 53.6	77.00	PK1846	\$253.97	40009M07700	\$184.00	7700YC	S677	W6661 \$69.96	
Dirt												CW16
ATV	KX250F 14.2:1 High Comp. ArmorGlide skirt coat	2010	77 x 53.6	77.00	PK1847	\$289.97	40010M07700	\$220.00	7700YC	S677	W6661 \$69.96	
Street												CW16
Yamaha	KX250F Racers Choice 14.2:1 High Comp. Boxed forgings	2010	77 x 53.6	77.00			RC886M07700	\$282.00	7700YCA	S677C	W6661 \$69.96	
Dirt										Titanium nitride coated rings	CW16	
ATV	ArmorPlating											
Street												
PWC	DLC coated pin ArmorGlide skirt coat											

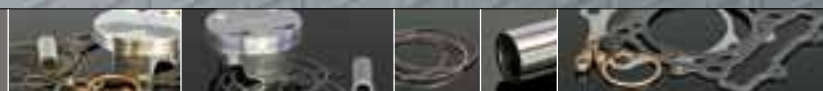
Sleeves
Rings
Accessories
Apparel

PK kits include: Pistons, rings, pins, clips, top end gasket kit, & needle bearing when applicable.
CK kits include: Pistons, rings, pins, clips, top end gasket kit, & cylinder/sleeve when applicable.
 • Individual pistons include: Rings, pins & clips *(unless noted otherwise)*.

- Premium pump fuel required for high compression ratios up to 13.5:1.
- Increased Octane (race fuel) required for comp. ratios over 13.5:1.

KAWASAKI

Motorcycle • 4-Stroke



Model	Years	Std. Bore x Stroke (mm)	Bore (mm)	Top End Kit	Price Per Kit	Piston (rings, pin & clips)	Price Per Piston	Repl. Ring Set	Repl. Pin & Clips	Complete Top End Gasket Kit
KX250F 13.5:1 Comp. ArmorGlide skirt coat	2011-13	77 x 53.6	77.00	PK1879	\$253.96	40019M07700	\$184.00	7700YC	S677 W6883	W6661 \$69.96
KX250F 14.5:1 High Comp. ArmorGlide skirt coat	2011-13	77 x 53.6	77.00	PK1880	\$289.96	40020M07700	\$220.00	7700YC	S677 W6883	W6661 \$69.96
KX250F Racers Choice 14.2:1 High Comp. Boxed forgings ArmorPlating DLC coated pin ArmorGlide skirt coat	2011-13	77 x 53.6	77.00			RC894M07700	\$282.00	7700YCA <i>Titanium nitride coated rings</i>	S677C W6883	W6661 \$69.96
KLX300 11:1 Comp. <i>Electrofusion Bore - Cylinder sleeving or replating required for oversizes.</i>	1997-06	78 x 61.2	78.00 80.00			4630M07800 *4630M08000	\$169.54 B.O.D.	3071XG 3150XG	78mm S533 80mm S523 CW17	78mm W5567 1997-07 \$42.68 80mm W5924 1997-07 \$49.82
KLX400 12.2:1 Stock Comp. Nikasil Bore	2003-06	90 x 62.6	90.00 92.00	PK1659 ---	\$252.80	4713M09000 4713M09200	\$184.01 \$202.40	35433XR 3622XR	S549 CW20	W5881 \$68.79
KLX400 13.5:1 High Comp. Nikasil Bore	2003-06	90 x 62.6	90.00 92.00	PK1661 ---	\$261.72	4714M09000 *4714M09200	\$192.93 B.O.D.	35433XR 3622XR	S549 CW20	W5881 \$68.79
KLX400 440cc Big Bore Kit 12.5:1 Comp. ArmorGlide skirt coat Nikasil Bore	2003-06	90 x 62.6	90.00 94.50	PK1663	\$287.79	4795M09450	\$219.00	3720XP	S549 CW20	W6103 \$68.79
KLX400 440cc Big Bore Kit 13.5:1 High Comp. ArmorGlide skirt coat Nikasil Bore	2003-06	90 x 62.6	90.00 94.50	PK1664	\$294.37	4796M09450	\$225.58	3720XP	S549 CW20	W6103 \$68.79
KX450F 12:1 Stock Comp. ArmorGlide skirt coat	2006-08	96 x 62.1	96.00	PK1403	\$271.67	4900M09600	\$196.00	9600ZV	S682 CW19	W6434 \$75.21
KX450F 13:1 Comp. ArmorGlide skirt coat	2006-08	96 x 62.1	96.00 98.00	PK1405 ---	\$297.21	4901M09600 4901M09800	\$222.00 \$240.00	9600ZV 9800ZV	S682 CW19	96mm W6434 \$75.21 98mm W6435
KX450F 12.5:1 Stock Comp. ArmorGlide skirt coat	2009-12	96 x 62.1	96.00	PK1841	\$253.52	4980M09600	\$187.54	9600ZV	S682 CW19	W6650 \$65.98
KX450F 13.5:1 High-Comp. ArmorGlide skirt coat	2009-12	96 x 62.1	96.00	PK1840	\$275.93	4990M09600	\$209.95	9600ZV	S682 CW19	W6650 \$65.98
KX450F Racers Choice 13.7:1 High Comp. Boxed forging ArmorPlating DLC coated pin ArmorGlide skirt coat	2009-12	96 x 62.1	96.00			RC885M09600	\$282.00	9600ZVA <i>Titanium nitride coated rings</i>	S682C CW19	W6650 \$65.98
KX450F New 12.5:1 Stock Comp. ArmorGlide skirt coat	2013	96 x 62.1	96.00			40082M09600	\$196.00	9600ZV	S682 CW19	
KLX450R 12:1 Stock Comp. ArmorGlide skirt coat	2006-11	96 x 62.1	96.00	PK1403	\$262.75	4900M09600	\$196.00	9600ZV	S682 CW19	W6434 \$75.21
KLX450R 13:1 Comp. ArmorGlide skirt coat	2006-11	96 x 62.1	96.00 98.00	PK1405 ---	\$295.16	4901M09600 4901M09800	\$222.00 \$240.00	9600ZV 9800ZV	S682 CW19	96mm W6434 \$75.21 98mm W6435
KLX650C KLX650R 9.5:1 Stock Comp.	1993-95 1996-01	100 x 82	100.00 100.50 101.50			*7971M10000 *7971M10050 *7971M10100	B.O.D. B.O.D. B.O.D.	3937XS 10050XS 10100XS	S627 W6045	

*Build On Demand - Contact Wiseco for pricing, batch minimums, and lead times.

- Electronics
- Fuel Management
- Crankshafts
- Cams/Valves
- Clutch
- Top End
- Can-Am
- ATV
- European
- Dirt
- Street
- Honda
- Dirt
- ATV
- Street
- Kawasaki
- Dirt
- ATV
- Street
- KTM
- Dirt
- ATV
- Street
- Polaris
- ATV
- Suzuki
- Dirt
- ATV
- Street
- Yamaha
- Dirt
- ATV
- Street
- PWC
- Sleeves
- Rings
- Accessories
- Apparel

KAWASAKI

ATV • 2-Stroke



	Model	Years	Std. Bore x Stroke (mm)	Bore (mm)	Top End Kit	Price Per Kit	Piston (rings, pin & clips)	Price Per Piston	Repl. Ring Set	Repl. Pin & Clips	Complete Top End Gasket Kit	Top End Bearing		
Electronics	KFX50	All Years	41	41.00	PK1665	\$125.15	826M04100	\$88.00	1614CD	S563	W6207	B1000		
Fuel Management			x	41.50	PK1666		826M04150	\$88.00	1634CD			2003-06	\$15.82	
Crankshafts			37.8	42.00	PK1667		826M04200	\$88.00	1654CD				\$21.33	
				42.50	---		*826M04250	B.O.D.	1674CD					
				43.00	---		826M04300	\$92.00	1693CD					
Cams/Valves	KFX80	2003-06	50	50.00	PK1099	\$133.82	673M05000	\$92.00	1969CD	S538	W5520	B1000		
Clutch			x	50.25	PK1100		673M05025	\$92.00	1979CD				\$27.91	\$15.82
			42	50.50	PK1101		673M05050	\$92.00	1988CD					
Top End				50.75	---		*673M05075	B.O.D.	1998CD					
				51.00	PK1103		673M05100	\$92.00	2008CD					
		51.50	PK1104	673M05150	\$102.00	2028CD								
		52.00	PK1105	673M05200	\$102.00	2047CD								
Can-Am	KXT250 A1 Tecate	thru 1987	70	70.00			439M07000	\$162.00	2756CD	S513	W4037	W5076	B1022	
ATV			x	70.50			439M07050	\$162.00	2776CD			1984-85	1986-87	\$16.96
European	3-Wheeler only Electrofusion Bore		64.9	71.00			439M07100	\$162.00	2795CD		CW18	\$26.58	\$46.99	
				71.50			*439M07150	B.O.D.	2815CD					
Dirt	Tecate-4 250 4-Wheeler only Pro-Lite™ Electrofusion Bore	1987-88	67.4	67.40			556M06740	\$162.00	2652CD	S508	W5119		B1022	
Street			x	68.00			*556M06800	B.O.D.	2677CD			\$46.56	\$16.96	
			70	68.50			556M06850	\$162.00	2697CD					
				69.00			*556M06900	B.O.D.	2717CD					
Honda			69.50				556M06950	\$182.00	2736CD					

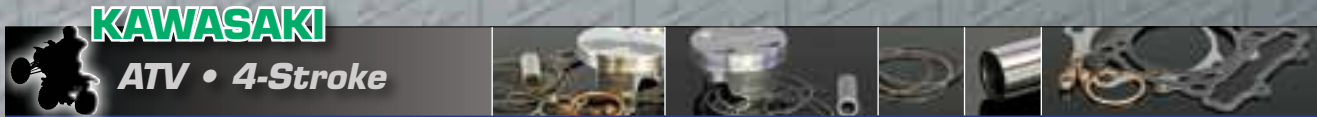
*Build On Demand - Contact Wiseco for pricing, batch minimums, and lead times.



- Kawasaki
- Dirt
- ATV
- Street
- ATV
- Dirt
- ATV
- Street
- Polaris
- ATV
- Suzuki
- Dirt
- ATV
- Street
- Yamaha
- Dirt
- ATV
- Street
- PWC
- Sleeves
- Rings
- Accessories
- Apparel

PK kits include: Pistons, rings, pins, clips, top end gasket kit, & needle bearing when applicable.
CK kits include: Pistons, rings, pins, clips, top end gasket kit, & cylinder/sleeve when applicable.
 • Individual pistons include: Rings, pins & clips *(unless noted otherwise)*.

• Premium pump fuel required for high compression ratios up to 13.5:1.
 • Increased Octane (race fuel) required for comp. ratios over 13.5:1.



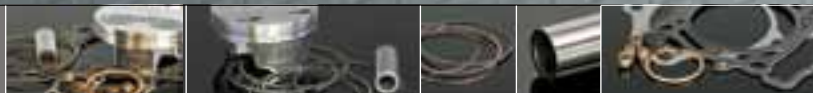
Model	Years	Std. Bore x Stroke (mm)	Bore (mm)	Top End Kit	Price Per Kit	Piston (rings, pin & clips)	Price Per Piston	Repl. Ring Set	Repl. Pin & Clips	Complete Top End Gasket Kit
KLF220 Bayou 9.3:1 Comp.	1988-03	67 x 61	67.00 67.50 68.00	PK1047 PK1048 PK1049	\$186.86	4670M06700 4670M06750 4670M06800	\$146.79	2638XC 2658XC 2677XC	S271 CW16	W5739 \$40.07
KSF250 Mojave Liquid Cooled 11.5:1 Comp.	thru 2005	74 x 58	74.00 74.50 75.00	PK1746 PK1747 PK1748	\$190.25	4418M07400 4418M07450 4418M07500	\$151.22	2913XC 2933XC 2953XC	S278 CW18	W5563 \$39.03
KLF300 Bayou KLF300 Bayou 4x4 KEF300 Lakota Sport KVF300 Prairie KVF300 Prairie 4x4 8.6:1 Comp.	1986-03 1986-03 1995-03 1999-03 1999-03	76 x 64 x 77.50	76.00 76.50 77.00 77.50	PK1050 PK1051 PK1052 PK1053	\$205.27 \$221.79	4671M07600 4671M07650 4671M07700 4671M07750	\$165.20 \$181.72	2992XC 3012XC 3032XC 3051XC	S278 CW18	W5740 \$40.07
KFX400 12.2:1 Stock Comp. Nikasil Bore	2003-06	90 x 62.6	90.00 92.00	PK1659 ---	\$252.80	4713M09000 4713M09200	\$184.01 \$202.40	35433XR 3622XR	S549 CW20	W5881 \$68.79
KFX400 13.5:1 High Comp. Nikasil Bore	2003-06	90 x 62.6	90.00 92.00	PK1661 ---	\$261.72	4714M09000 *4714M09200	\$192.93 B.O.D.	35433XR 3622XR	S549 CW20	W5881 \$68.79
KFX400 440cc Big Bore Kit 12.5:1 Comp. ArmorGlide skirt coat Nikasil Bore	2003-06	94.5 x 62.6	94.50	PK1663	\$287.79	4795M09450	\$219.00	3720XP	S549 CW20	W6103 2003-04 \$68.79
KFX400 440cc Big Bore Kit 13.5:1 Comp. ArmorGlide skirt coat Nikasil Bore	2003-06	94.5 x 62.6	94.50	PK1664	\$294.37	4796M09450	\$225.58	3720XP	S549 CW20	W6103 2003-04 \$68.79
KFX450R 12.4:1 Comp. ArmorGlide skirt coat Nikasil Bore	2008-13	96 x 62.1	96.00	PK1864	\$261.98	4973M09600	\$196.00	9600XS	S656 CW21	W6651 \$65.98
KFX450R 13.4:1 High Comp. ArmorGlide skirt coat Nikasil Bore	2008-13	96 x 62.1	96.00	PK1865	\$287.98	4974M09600	\$222.00	9600XS	S656 CW21	W6651 \$65.98
KFX450R Racers Choice Strutted Forging ArmorPlating New DLC coated pin 14:1 High Comp. ArmorGlide skirt coat	2008-13	96 x 62.1	96.00	PK1865	\$287.98	RC897M09600	\$282.00	9600ZVA	S660C CW19	W6651 \$65.98
Brute Force 650 Prairie 650 Twin Cyl. 11:1 Comp. • Boring required on cast iron bore models. • Independent rear suspension models have Nikasil bore - req'r bore/replate or sleeving	2005-10 2002-03	80 x 63	80.00 80.50 81.00 82.00	PK1852 PK1853	\$246.25	4782M08000 4782M08050 4782M08100 4782M08200	\$149.43	3150XC 3169XC 3189XC 3228XC	S520 CW20	Prairie 80-81mm 2002-03 W6105 \$96.82 Brute Force 82mm 2005-07 W6162 \$65.81
KFX700 Prairie 700 11.5:1 Comp.	2004-10 2004-06	82 x 66	82.00 84.00	PK1822 PK1823	\$475.10 \$510.62	4896M08200 4896M08400	\$177.55 \$195.31	3228XC 3307XC	S641 CW20	KFX700 82mm W6162 \$120.00 84mm W6409 \$120.00 Prairie 700 W6162 \$120.00
Prairie Brute Force 750 Terx750, LE, NRA (4x4's) 11.5:1 Comp. Cylinder boring & replating required for oversizes	2005-07 2008	85 x 66	85.00 87.00	PK1824 PK1825	\$437.48 \$469.51	4897M08500 4897M08700	\$177.55 \$195.31	3347XC 3425XC	S641 CW20	W6440 \$122.91

*Build On Demand - Contact Wiseco for pricing, batch minimums, and lead times.

Electronics
Fuel Management
Crankshafts
Cams/Valves
Clutch
Top End
Can-Am
ATV
European
Dirt
Street
Honda
Dirt
ATV
Street
Kawasaki
Dirt
ATV
Street
KTM
Dirt
ATV
Street
Polaris
ATV
Suzuki
Dirt
ATV
Street
Yamaha
Dirt
ATV
Street
PWC
Sleeves
Rings
Accessories
Apparel

KAWASAKI

Street Bikes



	Model	Years	Std. Bore x Stroke (mm)	Bore (mm)	Displ.	Top End Kit	Kit Price	Wiseco Piston	Price Per Piston	Repl. Ring Set	Repl. Pin & Clips	Gasket Kit	
Electronics	KR1 S <i>Electra Coated</i>	1992	56 x 50.6	56.00	249cc			*11305M05600	B.O.D.	2205CD	S270		
Fuel Management	European KR1 S European Z 250 10.25:1 Comp.	All years	71 x 66	71.00	246cc			4022M07100	\$152.00	2795XC	S523		
Crankshafts												CW17	
Cams/Valves	EX250 Ninja <i>New</i>	2006-12	62 x 41.2	62.00 64.00	248.8cc 265cc			40062M06200 40062M06400	\$129.95	2441XA 2520XC	S680	TBA	
Clutch	EX250 Ninja <i>New</i>	2006-12	62 x 41.2	66.00	282cc			40063M06600	\$139.95	2598XA	S680	TBA	
Top End													CW16
Can-Am	500S 500 H1	1969-76	60	60.50	507cc	K101	\$392.47	149M06050	\$134.87	2382CD	S256	B1021	
ATV	500 KH <i>New</i> Mach III		x	61.00	516cc	K102		149M06100	\$134.87	2402CD			Top End Bearing
European	Triple Cylinder Electra Coated ArmorGlide skirt coat		58.8	61.50	524cc	K103	\$431.72	149M06150	\$148.36	2421CD	CW16		\$16.96
Dirt			62.00	533cc	---		*149M06200	B.O.D.	2441CD				
Street	750 Mach IV 750 H2 <i>New</i>	1972-75	71	71.00	748cc	K105	\$430.07	423M07100	\$137.75	2795CD	S259	B1005	
Honda	Triple Cylinder		x	71.50	759cc	K106		423M07150		2816CD			Top End Bearing
Dirt	Electra Coated		63	72.00	770cc	K107		423M07200		2835CD	CW16		\$16.96
ATV	ArmorGlide skirt coat			72.50	780cc	K108	\$473.09	423M07250	\$151.52	2854CD			
Street	GPZ550 KZ550 ZX550	1982-95	58	61.00	615cc	K615	\$664.05	4185M06100	\$152.00	2402XA	S394	W3162	
Kawasaki	10.25:1 Comp. Cylinder boring only.		x										CFM20 head gasket
Dirt			52.40										\$56.05
ATV	ZX6R Ninja	2003-05	66 x 43.80	68.00	636cc	CK175 Gaskets not in kit	\$646.52	4874M06800	\$161.63	2677XA	S686	W6359	
Street	12.9:1 Comp. ArmorGlide skirt coat											Optional spring steel head gasket	
KTM												\$90.56	
Dirt	ZX6R Ninja	2003-05	66	70.00	674cc	CK202 Gaskets not in kit	\$698.04	4874M07000	\$174.51	2756XA	S686	W6660	
ATV	13.5:1 Comp. Cylinder boring and replating required		x										Optional spring steel head gasket
Street	ArmorGlide skirt coat		43.80										\$90.56
Polaris	ZX600P ZX600R	2007-08 2009-12	67 x 42.5	67.00	599cc	CK226	\$646.52	40032M06700	\$161.63	2638XA	S635		
ATV	13.8:1 Comp.											CW15	
Suzuki	KZ650	1976-83	62 x 54	64.00	700cc	K700	\$664.05	4037M06400	\$152.00	2520XC	S522	W2486	
Dirt	10.25:1 Comp. Cylinder boring only											CFM20 Head Gasket	
ATV	GPZ 750 KZ 750	1980-85	66	69.00	810cc	K810	\$664.05	4186M06900	\$152.00	2717XC	S526	W3163	
Street	10.25:1 Comp. Cylinder boring only		x										CFM20 Head Gasket
Yamaha	ZN 750		54.14									CW15	
Dirt												\$56.05	
ATV												KA686SL	
Street												Optional sleeve	
												\$71.68	
PWC	ZX750 E1, Turbo	1983-86	66 x 54.14	69.00	810cc	P809B Gaskets not in kit	\$670.40	4335M06900	\$167.60	2717XC	S259	Copper Head Gaskets recommended.	
Sleeves	8:1 Comp. Cylinder boring only. Copper head gasket recommended.											CW16	
Rings												KA686SL	
Accessories												Optional sleeve	
Apparel												\$71.68	
	ZX7 ZX750 ZX750R	1991-95	71 x 47.24	72.00	765cc	*R766	B.O.D.	*4518M07200	B.O.D.	2835XA	S537	W5534	
	12:1 Comp. Cylinder boring only											Spring steel head gasket	
												CW18	
												\$90.56	
												W6051	
												Optional base gasket	
												\$34.75	

*Build On Demand - Contact Wiseco for pricing, batch minimums, and lead times.

Kits include: Pistons, rings, pins, clips & Gaskets (unless listed as "Optional" in the far right column).

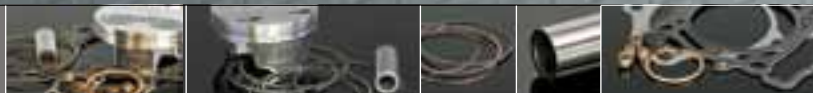
- Premium pump fuel required for high compression ratios up to 13.5:1.
- Increased Octane (race fuel) required for comp. ratios over 13.5:1.

KAWASAKI Street Bikes		Top End Kit		Kit Price		Wiseco Piston		Price Per Piston		Repl. Ring Set		Repl. Pin & Clips		Gasket Kit	
Model	Years	Std. Bore x Stroke (mm)	Bore (mm)	Displ.	Top End Kit	Kit Price	Wiseco Piston	Price Per Piston	Repl. Ring Set	Repl. Pin & Clips	Gasket Kit				
ZX7R ZX7RR 13:1 Comp.	1996-03	73 x 44.7	73.00	748cc			*4702M07300	B.O.D.	2874XA	S537 CW18	W5886 Spring steel head gasket \$90.56 W6052 Optional base gasket \$34.75	Electronics	Fuel Management	Crankshafts	
ZX7R ZX7RR 12.5:1 Comp. <i>Cylinder boring only</i>	1996-03	73 x 44.7	74.50	779cc	CK111 Base gaskets not in kit	\$755.44	4703M07450	\$166.22	2933XA	S537 CW18	W5887 Spring steel head gasket \$90.56 W6052 Optional base gasket \$34.75	Cams/Valves	Clutch	Top End	
ZX9R 13:1 Comp. <i>Cylinder boring only</i>	1994-97	73 x 53.74	75.00	950cc	R951 Base gaskets not in kit	\$755.44	4591M07500	\$166.22	2953XG	S343 CW18	W5440 Spring steel head gasket \$90.56 W6051 Optional base gasket \$34.75	Can-Am	ATV	European	
ZX9R 12:1 Comp. <i>Cylinder boring only</i>	1998-03	75 x 50.9	76.00	923cc			*4652M07600	B.O.D.	2992XG	S343 CW18	W5687 Spring steel head gasket \$90.56 W6053 Optional base gasket \$34.75	Dirt	Street	Honda	
ZX9R 13.5:1 Comp. <i>Cylinder boring and replating required</i>	2000-03	75 x 50.9	78.00	973cc			*4757M07800	B.O.D.	3071XG	S524 CW18	W6029 Spring steel head gasket \$90.56 W6054 Optional base gasket \$34.75	Dirt	ATV	Street	Kawasaki
GPZ900R Ninja Eliminator ZL900 11:1 Comp. <i>Cylinder boring only</i>	1985-87	75 x 55	75.00	972cc	K972 Base gasket not in kit	\$677.17	4415M07500	\$155.28	2953XG	S555 CW18	W3885 CFM20 Head Gasket \$56.05 W6055 Optional Base Gasket \$34.75 Opt'l Sleeve: KA863SL \$74.47	Dirt	ATV	Street	KTM
ZX10-R 13.5:1 Comp.	2004-07	76 x 55	76.00	998cc	CK157 Gaskets not in kit	\$685.36	4853M07600	\$171.34	2992XG	S688 CW17	Optional head gaskets: W6654 (2004-05) \$74.15 W6655 (2006-07) \$81.77	Dirt	ATV	Street	Polaris
KZ1000J KZ1000R 10.25:1 Comp. <i>Cylinder boring only.</i> <i>Note: 17mm piston pin.</i>	1981-83	70 x 66	72.00	1075cc	K1076 Base gasket not in kit	\$664.77	4548M07200	\$152.18	2835XC	S523 CW17	W3918 CFM20 Head Gasket \$56.05 W5026 Optional Base Gasket \$34.75	Dirt	ATV	Street	Suzuki
KZ1000J KZ1000R 10.25:1 Comp. <i>Cylinder boring only.</i> <i>Note: 17mm piston pin.</i>	1981-83	70 x 66	73.00	1105cc	K1106	\$664.77	4548M07300	\$152.18	2874XC	S523 CW17	W3918 CFM20 Head Gasket \$56.05 W5026 Optional Base Gasket \$34.75	Dirt	ATV	Street	Yamaha
GPZ1000RX Ninja GTR1000 11:1 Comp. <i>Cylinder boring only.</i> <i>Note: 18mm piston pin.</i>	1986-87 1986-00	74 x 58	75.50	1039cc	K1039	\$677.18	4413M07550	\$155.28	2973XG	S555 CW18	W3885 CFM20 Head Gasket \$56.05	PWC	Sleeves	Rings	
ZX10 ZX1000 Ninja Tom Cat 11:1 Comp. <i>Cylinder boring only</i>	1988-89	74 x 58	75.50	1039cc	K1040	\$711.68	4445M07550	\$155.28	2973XG	S555 CW18	W5533 Spring Steel Head Gasket \$90.56 W6055 Optional Base Gasket \$34.75	Accessories	Apparel		

*Build On Demand - Contact Wiseco for pricing, batch minimums, and lead times.

KAWASAKI

Street Bikes



	Model	Years	Std. Bore x Stroke (mm)	Bore (mm)	Displ.	Top End Kit	Kit Price	Wiseco Piston	Price Per Piston	Repl. Ring Set	Repl. Pin & Clips	Gasket Kit
Electronics	ZX11 C1	1990-94	76	78.00	1109cc	R1052	\$755.44	4578M07800	\$166.22	3071XG	S524	W5486
Fuel Management	ZX11 D1	1993-01	x									Spring Steel Head Gasket
	ZRX1100	1990-01	58								CW18	\$90.56
Crankshafts	GPZ1100	1997-01										W6057
Cams/Valves	12:1 Comp. <i>Cylinder boring only</i>	1995-97										Optional Base Gasket
												\$34.75
Clutch	KZ900	thru 1980	KZ900	70.00	1015cc	K1015	\$678.37	4020M07000	\$152.00	2756XC	S523	W3917
	KZ1000	thru 1980	66									CFM20 Head Gasket (1 OB)
	KZ1000 ST	thru 1980	x								CW17	\$56.05
Top End	Z1R	1977-80	66									W5380
	Z2R	1977-80	KZ1000									Fiber Base Gasket
Can-Am	10.25:1 Comp.		70									\$14.32
	<i>Cyl. boring only - KZ900</i>		x									Optional Sleeves:
ATV	<i>Drop-in kit for KZ1000</i>		66									KA627SL
												\$72.18
European	KZ900	thru 1980	KZ900	71.00	1045cc	K1045	\$678.37	4022M07100	\$152.00	2795XC	S523	W3917
Dirt	KZ1000	thru 1980	66									CFM20 Head Gasket
Street	KZ1000 ST	thru 1980	x								CW17	\$56.05
	Z1R	1977-80	66									W5380
	Z2R	1977-80	KZ1000									Fiber Base Gasket
Honda	10.25:1 Comp.		70									\$14.32
Dirt	<i>Cylinder boring only</i>		x									Optional Sleeves:
ATV			66									KA627SL
												\$72.18
Street	KZ900	thru 1980	KZ900	72.00	K1075cc	K10741	\$638.53	4379M07200	\$142.04	2835XC	S523	W3918
Kawasaki	KZ1000	thru 1980	66									CFM20 Head Gasket
	KZ1000 ST	thru 1980	x								CW17	\$56.05
Dirt	Z1R	1977-80	66									W5380
ATV	Z2R	1977-80	KZ1000									Fiber Base Gasket
	9:1 Comp.		70									\$14.32
Street	<i>Cylinder boring only.</i>		x									Optional Sleeves:
	<i>Resleeving required for KZ900.</i>		66									KA627SL
												\$72.18
KTM	KZ900	thru 1980	KZ900	72.00	1075cc	K10751	\$678.37	4052M07200	\$152.00	2835XC	S523	W3918
Dirt	KZ1000	thru 1980	66									CFM20 Head Gasket
ATV	KZ1000 ST	thru 1980	x								CW17	\$56.05
Street	Z1R	1977-80	66									W5380
	Z2R	1977-80	KZ1000									Fiber Base Gasket
Polaris	10.25:1 Comp.		70									\$14.32
ATV	<i>Cylinder boring only.</i>		x									Optional Sleeves:
	<i>Resleeving required for KZ900.</i>		66									KA627SL
												\$72.18
Suzuki	KZ900	thru 1980	KZ900	72.00	1075cc	K1075	\$967.09	4052M07200	\$152.00	2835XC	S523	W3918
Dirt	KZ1000	thru 1980	66			kit includes sleeves						CFM20 Head Gasket
ATV	KZ1000 ST	thru 1980	x								CW17	\$56.05
Street	Z1R	1977-80	66									W5380
	Z2R	1977-80	KZ1000									Fiber Base Gasket
	10.25:1 Comp.		70									\$14.32
Yamaha	<i>Resleeving required for KZ900</i>		x									Sleeves:
Dirt			66									KA627SL
												\$72.18
ATV	KZ900	thru 1980	KZ900	72.00	1075cc	R1075	\$707.49	4227M07200	\$159.47	2835XC	S523	W3918
Street	KZ1000	thru 1980	66									CFM20 Head Gasket
	KZ1000 ST	thru 1980	x								CW17	\$56.05
PWC	Z1R	1977-80	66									W5380
	Z2R	1977-80	KZ1000									Fiber Base Gasket
Sleeves	12:1 Comp.		70									\$14.32
	<i>Resleeving required for KZ900.</i>		x									Optional Sleeves:
Rings	<i>Cylinder boring only for KZ1000.</i>		66									KA627SL
Accessories												\$72.18

*Build On Demand - Contact Wiseco for pricing, batch minimums, and lead times.

Kits include: Pistons, rings, pins, clips & Gaskets (unless listed as "Optional" in the far right column).

- Premium pump fuel required for high compression ratios up to 13.5:1.
- Increased Octane (race fuel) required for comp. ratios over 13.5:1.

KAWASAKI		Street Bikes			Top End Kit		Wiseco Piston		Repl. Ring Set	Repl. Pin & Clips	Gasket Kit
Model	Years	Std. Bore x Stroke (mm)	Bore (mm)	Displ.	Top End Kit	Kit Price	Wiseco Piston	Price Per Piston	Repl. Ring Set	Repl. Pin & Clips	Gasket Kit
KZ900 KZ1000 KZ1000 ST Z1R Z2R 10.25:1 Comp. Resleeving and crankcase cleanup req'd for KZ900	thru 1980 thru 1980 thru 1980 1977-80 1977-80	KZ900 66 x 66 KZ1000 70 x 66	73.00	1105cc	K1105 kit includes sleeves	\$958.97	4052M07300	\$152.00	2874XC	S523 CW17	W3918 CFM20 Head Gasket \$56.05 W5380 Fiber Base Gasket \$14.32 Sleeves: KA629SL \$70.15
KZ900 KZ1000 KZ1000 ST Z1R Z2R 10.25:1 Comp. Cylinder boring only for KZ1000	thru 1980 thru 1980 thru 1980 1977-80 1977-80	KZ900 66 x 66 KZ1000 70 x 66	73.00	1105cc	K11051	\$678.37	4052M07300	\$152.00	2874XC	S523 CW17	W3918 CFM20 Head Gasket \$56.05 W5380 Fiber Base Gasket \$14.32 Optional Sleeves: KA629SL \$70.15
KZ900 KZ1000 KZ1000 ST Z1R Z2R 10.25:1 Comp. Resleeving and crankcase cleanup required	thru 1980 thru 1980 thru 1980 1977-80 1977-80	KZ900 66 x 66 KZ1000 70 x 66	74.00	1135cc	K1135 kit includes sleeves	\$958.97	4052M07400	\$152.00	2913XC	S523 CW17	W3918 CFM20 Head Gasket \$56.05 W5380 Fiber Base Gasket \$14.32 Sleeves: KA629SL \$70.15
KZ900 KZ1000 KZ1000 ST Z1R Z2R 10.25:1 Comp. Resleeving and crankcase cleanup required	thru 1980 thru 1980 thru 1980 1977-80 1977-80	KZ900 66 x 66 KZ1000 70 x 66	76.00	1197cc	K1200 kit includes sleeves	\$958.97	4177M07600	\$152.00	2992XG	S523 CW17	W3919 CFM20 Head Gasket \$56.05 W5380 Fiber Base Gasket \$14.32 Sleeves: KA629SL \$70.15
KZ900 KZ1000 KZ1000 ST Z1R Z2R 13.5:1 Comp. Resleeving and crankcase cleanup required. Drag racing only.	thru 1980 thru 1980 thru 1980 1977-80 1977-80	KZ900 66 x 66 KZ1000 70 x 66	83.00	1428cc	P1425	\$672.53	Left 4248M08300 Right 4249M08300	\$152.20	3268XG	S557 CW17	W5948 Copper Head Gasket \$64.53 W5363 Optional Base Gasket \$34.75 Optional Sleeves KA773SL \$70.15
GPZ KZ 13.5:1 Comp. Pro Stock (2-Valve) Extensive cylinder head machining required. Drag racing only. Big Block required.		85 x 66	85.00	1497cc			*4563M08500	B.O.D.	3347XC	S557 CW17	W5363 Optional Base Gasket \$34.75

*Build On Demand - Contact Wiseco for pricing, batch minimums, and lead times.



- Electronics
- Fuel Management
- Crankshafts
- Cams/Valves
- Clutch
- Top End
- Can-Am
- ATV
- European
- Dirt
- Street
- Honda
- Dirt
- ATV
- Street
- Kawasaki
- Dirt
- ATV
- Street
- KTM
- Dirt
- ATV
- Street
- Polaris
- ATV
- Suzuki
- Dirt
- ATV
- Street
- Yamaha
- Dirt
- ATV
- Street
- PWC
- Sleeves
- Rings
- Accessories
- Apparel

- Premium pump fuel required for high compression ratios up to 13.5:1.
- Increased Octane (race fuel) required for comp. ratios over 13.5:1.

KAWASAKI

Street Bikes

	Model	Years	Std. Bore x Stroke (mm)	Bore (mm)	Displ.	Top End Kit	Kit Price	Wiseco Piston	Price Per Piston	Repl. Ring Set	Repl. Pin & Clips	Gasket Kit
Electronics	GPZ1100 17mm piston pin 10.25:1 Comp. <i>Cylinder boring only</i>	1981-82	72.5 x 66	74.00	1135cc	K1136	\$679.65	4256M07400	\$152.32	2913XC	S523 CW17	W3918 Composite Head Gasket \$56.05
Fuel Management												W5496 Fiber Base Gasket \$14.32
Crankshafts												Optional Sleeves KA629SL \$70.15
Cams/Valves												
Clutch												
Top End	GPZ1100 17mm piston pin 10.25:1 Comp. <i>Cylinder boring only</i>	1981-82	72.5 x 66	75.00	1166cc	K1171	\$679.65	4255M07500	\$152.32	2953XG	S523 CW17	W5963 CFM-20 Head Gasket \$56.05
Can-Am												W5496 Fiber Base Gasket \$14.32
ATV												Optional Sleeves KA629SL \$70.15
European												
Dirt												
Street	KZ1100 GPZ1100 GPZX1100 ZX1100 18mm piston pin 9.5:1 Comp. <i>Cylinder boring only</i>	1983-84	72.5 x 66.2	75.00	1170cc	K1173	\$691.49	4380M07500	\$155.28	2953XG	S555 CW18	W5963 CFM-20 Head Gasket \$56.05
Honda												W5496 Fiber Base Gasket \$14.32
Dirt												Optional Sleeves KA629SL \$70.15
ATV												
Street												
Kawasaki	KZ1100 GPZ1100 GPZX1100 ZX1100 18mm piston pin 10.25:1 Comp. <i>Cylinder boring only</i>	1983-84	72.5 x 66.2	75.00	1170cc	K1172	\$691.49	4302M07500	\$155.28	2953XG	S555 CW18	W5963 CFM-20 Head Gasket \$56.05
Dirt												W5496 Fiber Base Gasket \$14.32
ATV												Optional Sleeves KA629SL \$70.15
Street												
KTM												
ATV	KZ1100 GPZ1100 GPZX1100 ZX1100 18mm pin 10.25:1 Comp. <i>Resleeving required</i>	1983-84	72.5 x 66.2	78.00	1262cc			*4304M07800	B.O.D.	3071XG	S555 CW18	W3920 Composite Head Gasket \$56.05
Street												W5496 Fiber Base Gasket \$14.32
Polaris												Sleeves KA750SL \$70.15
ATV												
Suzuki												
ATV	ZX12R 13.5:1 Comp.	2000-05	83 x 55.40	83.00	1198cc	CK132	\$751.97	4765M08300	\$166.22	3268XG	S527 CW21	W6316 Spring Steel Head Gasket \$87.09
Street												W6058 Optional Base Gasket \$31.64
Yamaha												
Dirt												
ATV												
Street	ZX14R Turbo 9:1 Comp. ArmorGlide skirt coat Use OEM Ring Set	2006-11	84 x 61	84.00	1352cc	CK234	\$565.60	40037M08400	\$174.50	OEM	S698 CW20	W6875 Spring Steel Head Gasket \$81.76
PWC												
Sleeves												
Rings												
Accessories												
Apparel	ZX14R 13.5:1 Comp. ArmorGlide skirt coat	2006-11	84 x 61	84.00	1352cc	CK227	\$586.31	40036M08400	\$151.11	8400ZX	S549 CW20	W6875 Spring Steel Head Gasket \$81.76
	ZX14R 13.5:1 Comp. ArmorGlide skirt coat	2006-11	84 x 61	86.00	1418cc	CK228	\$644.93	40036M08600	\$166.22	8600ZX	S549 CW20	W6876 Spring Steel Head Gasket \$81.76

*Build On Demand - Contact Wiseco for pricing, batch minimums, and lead times.